

BRISBANE *PowerCats*

Specialising in Fusion Powercats



Comfortable saloon with custom made fabric or optional leather lounge, reading lights and sliding saloon table.



Fully equipped galley complete with gas cooktop and oven, double stainless steel sink, trash receptacle and 130lt fridge/freezer combo.



Stunning interior design and including three double size beds, reading lights and full household size shower.

www.powercats.com.au

for more information

Email: info@powercats.com.au

David Stacey - 0419 676 725 or Peter Rogers - 0413 734 447

Our Technology:

The Fusion 40 has been designed and engineered using state-of-the-art technology. The result is an exceptionally innovative, attractive and safe boat with performance geared to your lifestyle.

All Fusion components are moulded in house using industry-leading modular vacuum infusion technology. By using modified vinylester resins, the Fusion 40 has a strong composite structure with weight kept to a minimum. Along with outstanding performance, this technology offers excellent protection against osmosis.

Standard Inclusions:

Exterior:

Windows in curved toughened glass.
Resin infused gelcoat fully moulded finish.

Layout:

Standard 3 cabin layout.

Interior:

Custom made fabric lounge.
2-pack paint and gel coat internal finish.
Ken Brock timber look flooring.
Sliding saloon table.
Fully equipped galley with gas cooktop and oven.
1 x 130lt 12 volt fridge/freezer combo.
Double stainless steel sink.
Trash receptacle.
40lt pressurized hot water system.
Pressurised hot/cold water to galley & bathroom via flick mixer.
Full household size shower including electric sump pump.
Manual toilet discharge via 68lt holding tank.
3 x double size high density enviro foam mattresses.
Reading lights located at all beds.
Saloon reading lights.

Cockpit:

Cleats – forward, port and starboard sides.
2 x helm seats
Hydraulic steering.
15" stainless steel steering wheel.
Large access hatch under console.
Storage lockers under cockpit seating.

Deck Gear:

8 x Deck hatches.
Moonlight hatches and port hatches with screens.
Solid foredecks.
Stainless steel bow rail.
6 x Docking cleats.
4 x Inflatable PVC fenders.
4 x Mooring lines.
Anchor bridle.
Electric windlass with helm and foredeck controls.

Engines & Electronics:

2 x BY150A Yanmar engines.
Fixed 3 blade alloy propellers.
Helm mounted engine instruments including engine monitoring and warning systems.
Primary and secondary fuel filters.
External engine hatches.
400 Amp/Hr A.G.M. house batteries.
100 Amp/Hr Start battery with VSR.
Salt water strainers.
Water and fuel tank gauges.
Engine room lights.
Stereo CD system with 4 speakers.

Navigation:

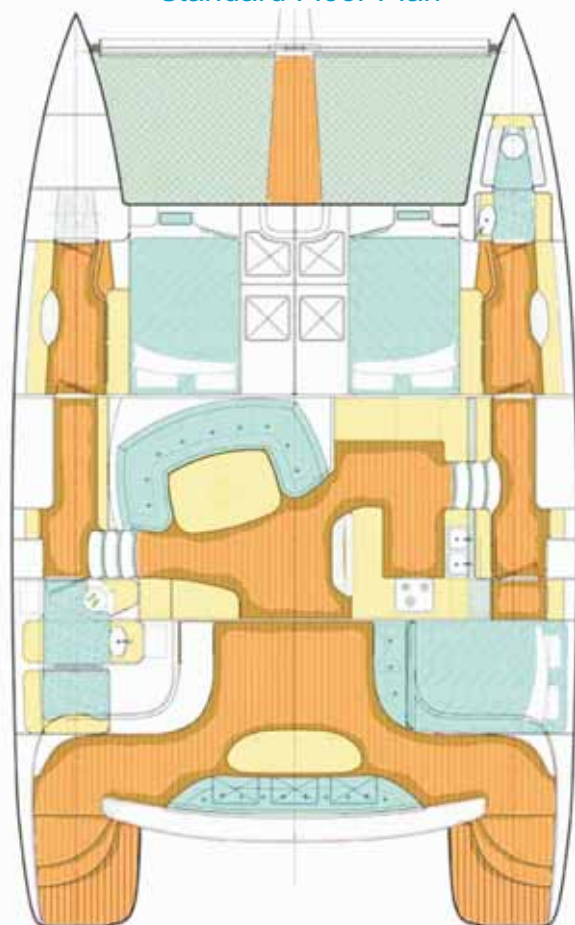
Raymarine St60 Tri-Data.
ICOM 302 VHF Radio.
95mm Steering Compass

Specifications:

Length:	12.2m	40'
Beam:	7.2m	23' 6"
Draft:	900mm	3'
Head Room:	Hulls 1.9m Saloon 1.95m	6' 2" 6' 4"
Bridge Deck Clearance:	960mm	3' 2"
Engine:	Twin Yanmar 4BY150A Common Rail Diesel	
Fuel Tanks:	940 litres	
Water Tanks:	600 litres	
Speed:	Top Speed 20 knots Cruise Speed 15 knots	@ under 2 litres per nautical mile
Berths:	3 x Double Bed Berth	

All figures are provisional and subject to change.
Right is reserved to make changes, modifications or improve production without notice.
Weight shown is an estimate with standard inventory equipment aboard.
Tank capacities are an estimate of the total capacity and will vary upon conditions.

Standard Floor Plan



ensuite optional extra